

IT Performance Monitoring Software

View real-time and historical performance across your entire hybrid IT environment—physical, virtual, cloud, and container—with Vityl Capacity Management.

Integrate Performance Data from Any Data Source

Efficiently gather data from a wide variety of infrastructure, pulling it all into one place. Whether it's Vityl data or from your other applications, middleware, databases, operating systems, hypervisors, storage systems, cloud instances, or Docker containers. See all the data you need for performance monitoring and free your IT team from having to maintain multiple, disparate data repositories.

Identify Service Delivery Issues Before They Impact Users

Monitor performance across large hybrid IT environments. See resource consumption by IT and business services with precision and accuracy. Ensure service availability by identifying problems before they impact users.

Resolve Problems Fast

Simplify root cause analysis for your hybrid IT environment. Seamlessly move from symptoms to diagnosis to resolution using fast root-cause identification with accurate and clear data.

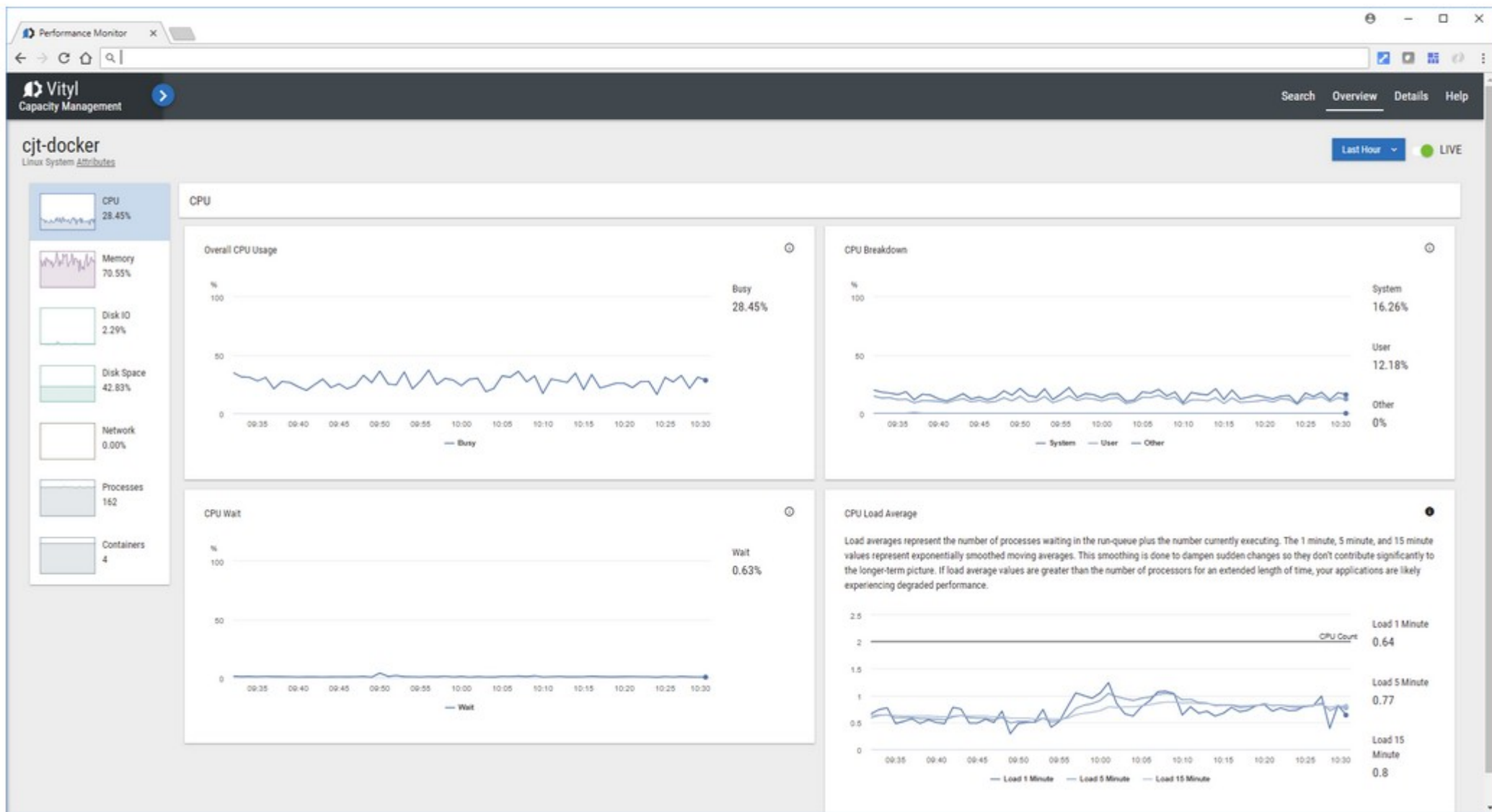
Do It All with a Single Capacity Management Tool

Use a single tool to see both the big picture and process-level details across your entire hybrid IT environment, even identifying where resources are used inefficiently. Utilize your performance data to improve your automated analytics and capacity plans so it's the only tool you need for capacity management. Standardize processes, delivering consistent data and analysis throughout your organization.



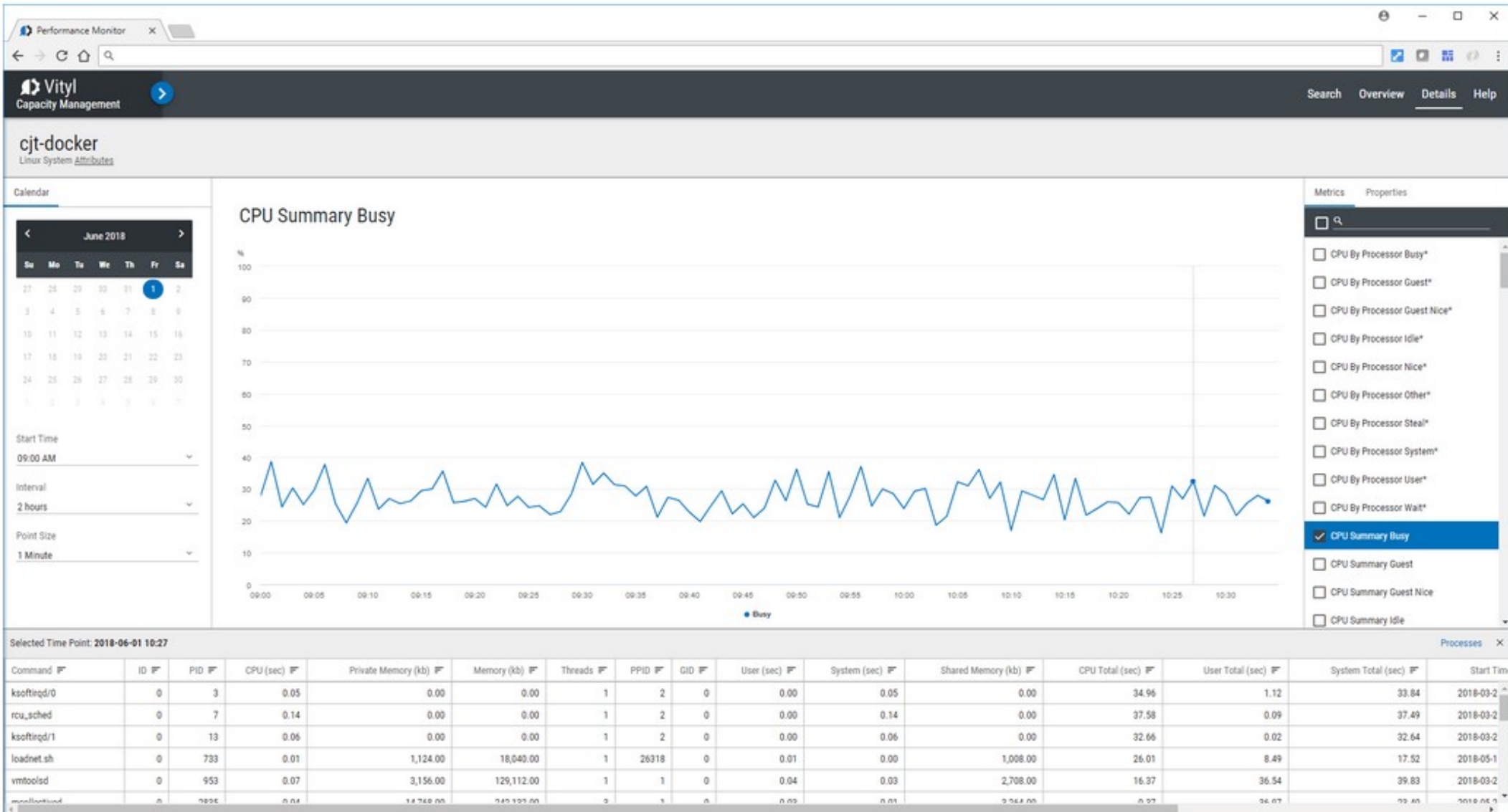
Overview

Being able to quickly locate and confirm whether or not a system has or recently had a performance issue is critical to keeping services up and running. The Overview workflow provides performance insight at a glance—comprehensive yet elegantly simple. Everything you need to know about the performance of your system is at your fingertips.



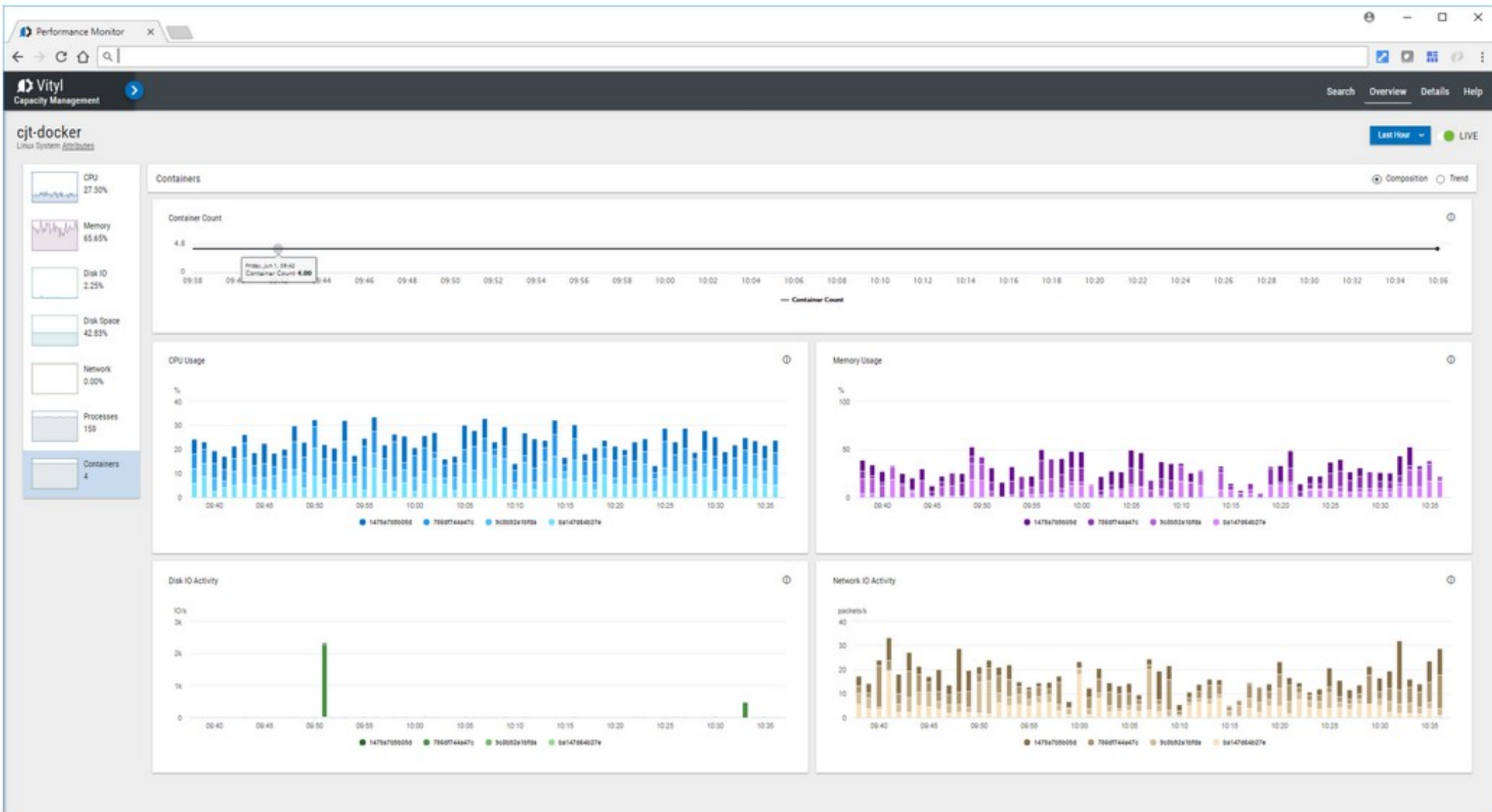
Process Details

Vityl Capacity Management collects, stores, and delivers granular, process-level details needed to solve real problems. Knowing about a spike in resource utilization (CPU, Memory, I/O, etc) is not enough. Knowing what causes the resource usage spikes is essential to analyzing performance and preventing outages. Vityl can deliver historical and real-time process-level details.



Container Support

Many organizations have realized the power of containers to help them streamline their application development pipeline. With Vityl Capacity Management, you have the unique ability to monitor your container workloads with the same tool as your physical, cloud, and other virtual instances and to use the performance data in your capacity planning practice.



Data Collectors

Vityl Capacity Management brings together data from your applications and systems along with VCM data to paint a complete picture of your hybrid IT environment. A RESTful API allows programmatic access to all of your data to enable the integration with third party solutions.

The screenshot shows the Vityl Capacity Management web interface. The main heading is "Collectors". On the left, there is a filter sidebar with sections for "Filter" (a search box), "Status" (radio buttons for Normal, Error, Unknown), and "Configurations" (checkboxes for ads, default, dockerConfiguration). The main content area contains a table with the following data:

<input type="checkbox"/>	Collector	Status	Configuration
<input type="checkbox"/>	cjt-cassandra-2	✓ Normal	default
<input type="checkbox"/>	cjt-cassandra-5	✓ Normal	ads
<input type="checkbox"/>	cjt-cassandra-3	✓ Normal	default
<input type="checkbox"/>	cjt-cassandra-4	✓ Normal	default
<input type="checkbox"/>	cjt-cassandra-1	✓ Normal	default
<input type="checkbox"/>	cjt-cassandra-6	✓ Normal	default
<input type="checkbox"/>	cjt-docker	✓ Normal	dockerConfiguration
<input type="checkbox"/>	cjt-vityl	✓ Normal	default

At the bottom of the table, there is a pagination control showing "1" in a circle, indicating the first page of results.