

## TEAMQUEST SURVEYOR®

Accelerate business and optimize IT services with enterprise capacity management

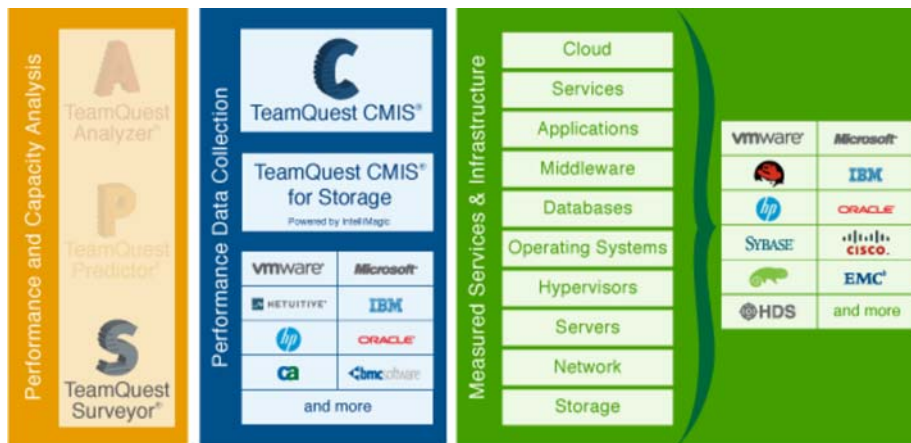
- ✓ Automated datacenter capacity analysis
- ✓ Business and IT service views
- ✓ Reporting service delivery & resource usage
- ✓ Actionable information on capacity

### Benefits

- Enables continuous financial optimization of business services delivered using IT.
- Optimizes business and IT service capacity, providing management-level visibility into business & IT service performance.
- Saves time and boosts IT productivity, by enabling you to automate and embed staff expertise.
- Reduces the frequency and severity of bottlenecks, by proactively analyzing and reporting across all relevant technology elements
- Delivers rapid ROI and immediate value, via powerful out-of-the box analysis, intelligence and reporting.
- Provides scalable investment protection, for the largest of environments, across underlying IT change.

### How it works

TeamQuest Surveyor comes with powerful performance analytic intelligence right out of the box and is also easily customized to provide exactly what you or your end-users need with an easy-to-use drag-and-drop web interface. And there is no client software to install; the user interface is provided via your web browser.



*TeamQuest Surveyor Architecture Diagram*

Some of TeamQuest Surveyor's unique capabilities come from the fact that it does not centrally store the data that it analyzes, but instead creates a virtual capacity management information system (CMIS) by federating your existing performance-related databases. It can work with nearly any data source. (See "Third-party Data Sources" in the diagram above.) No data replication is required. It uses whatever you have available, without requiring you to "rip and replace" your existing data collectors and performance databases. Should you ever change underlying infrastructure management tools, TeamQuest Surveyor makes it easy to migrate from one performance toolset to another,

analyzing older data from legacy databases and newer data from your new toolsets.

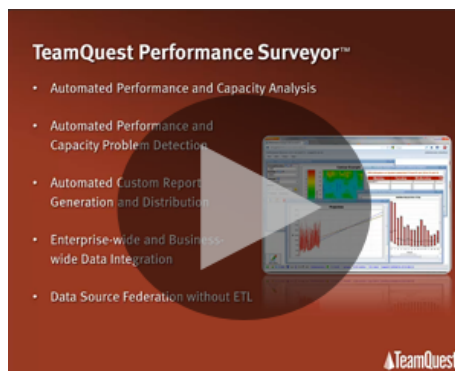
Naturally, one of the performance databases that TeamQuest Surveyor can federate is the distributed **TeamQuest CMIS**. Add TeamQuest Predictor to the mix and Surveyor can incorporate **TeamQuest Risk Prediction** results into Surveyor's analyses and reports. This makes it possible for you to be alerted in advance when your IT services are at risk of future outages and bottlenecks. You get the information you need to dodge problems before they actually become problems.

## Why it's better

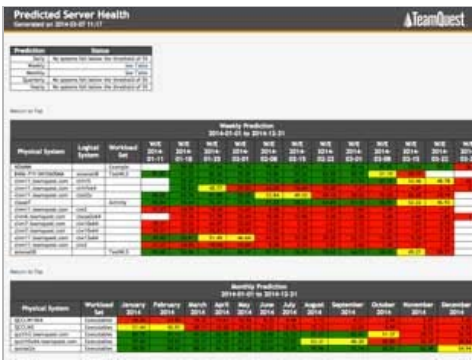
- Can report in business-relevant terms, including financial as well as technical data in its analyses
- Works in conjunction with TeamQuest Predictor and TeamQuest CMIS to provide advanced, automated predictive analytics.
- Meets your unique requirements; has built-in intelligence and unparalleled flexibility.
- Preserves your investment in performance tools, with a solution that works across any/all performance data sources & tools.
- Delivers investment protection, eliminating the need to "rip and replace" when you migrate to new IT tools.
- Extremely rapid ROI and value – within minutes with superior out-of-the-box reports & ease-of-customization.
- Integrates with the distributed TeamQuest CMIS, giving you the option of using TeamQuest's data collection and/or data management capabilities.

## Features

- Comprehensive service-to-server-to-storage, multi-tiered application performance reporting.
- Automated performance and capacity analysis, recent and historical
- Enterprise-wide, business-wide, and service-wide data analysis, working with your existing data sources, whether they be technical, process-related, or financial
- Analysis integrating data spanning all management domains and technology silos
- Handles both virtual and physical environments
- Proactive analytics via **TeamQuest Risk Prediction** when used in conjunction with **TeamQuest Predictor** and **TeamQuest CMIS**, informing you of impending problems before they actually become problems.
- TeamQuest Surveyor is a highly flexible and scalable capacity analysis and reporting web application that provides powerful analytics including:
  - Trending for performance and capacity analysis
  - Correlation analysis – multi-metric, multi-source
  - Top N reports
  - Static and dynamic grouping
  - Any period over period (e.g. Day-over-day) charts
  - Automated exception-oriented drill down
  - Calendar views
  - Heat maps



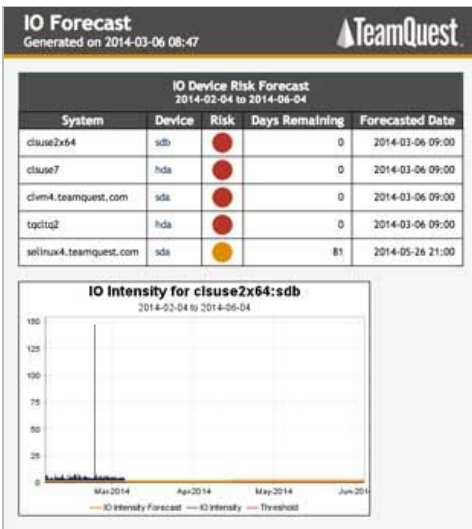
Video about TeamQuest Surveyor capabilities



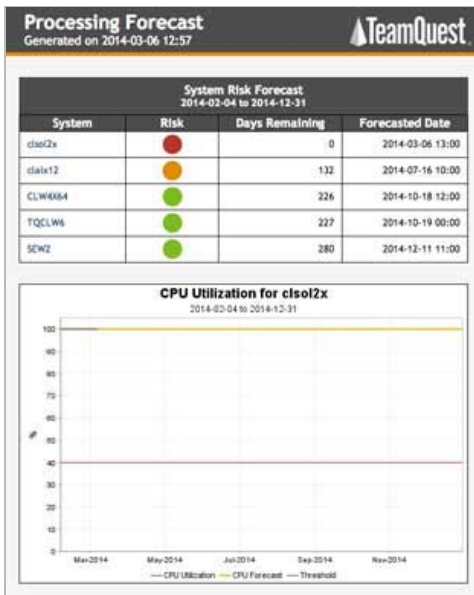
This Predicted Server Health report was produced by TeamQuest Surveyor. The report uses TeamQuest Risk Prediction analytics that were automated by TeamQuest CMIS and powered by TeamQuest Predictor. The report predicts what server health will be in the future, using our exclusive TeamQuest Performance Indicator. With information from this report, you can focus your efforts to avoid future outages and bottlenecks.



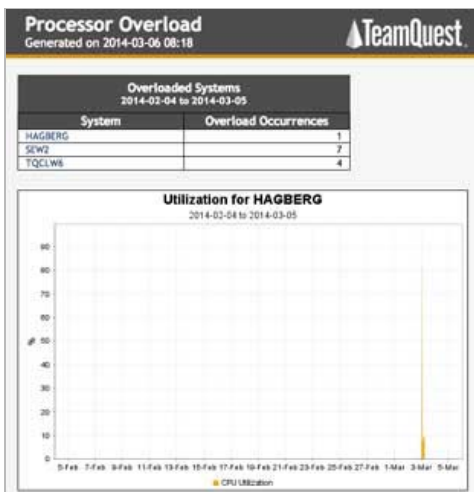
This Historical Server Health report was produced by TeamQuest Surveyor. The report uses analytics that were automated by TeamQuest CMIS and powered by TeamQuest Predictor. The report shows historical server health using our comprehensive TeamQuest Performance Indicator. With information from this report, you can quickly see which of your systems have been causing you problems.



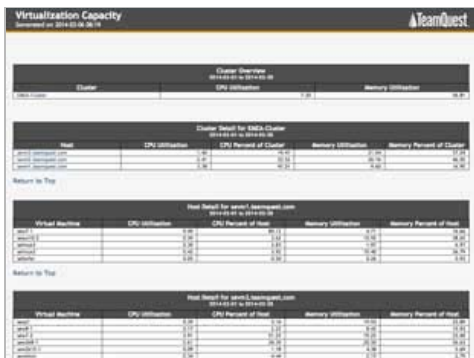
This IO Forecast report from TeamQuest Surveyor shows which devices on which servers are likely to overrun their IO capacity in the future. Details are provided on an exception basis only for those devices that are likely to experience problems. This view uses a linear trend built off historical utilization and so does not require TeamQuest Predictor.



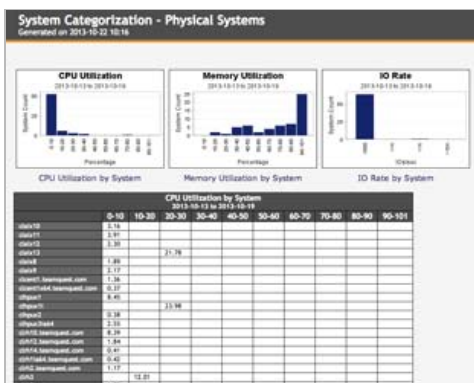
This Processing Forecast report from TeamQuest Surveyor is similar to the IO Forecast report, except that it shows which servers are likely to exceed CPU utilization thresholds in the future. Details are provided on an exception basis only for those servers that are likely to experience problems. This view uses a linear trend built off historical utilization and so does not require TeamQuest Predictor.



This Processor Overload report features a table at the top of showing systems with high processor utilization (over 80%) and overload occurrences (the number of times that processor queueing is greater than 1). For each report mentioned in the table, a detailed chart is provided showing utilization over the reporting interval.



This Virtualization Capacity report is useful for monitoring the overall capacity of your virtualized environment, looking for hot spots and opportunities for improving VM placement. The report shows the CPU and memory utilization of all the Clusters, Hosts and Virtual Machines in the environment.



Using this System Categorization report you can get a quick overview of utilization statistics. You can see the relative number of under-utilized servers and spot opportunities for server consolidation or for moving workloads from over-taxed servers.

**Enterprise Capacity**  
Generated on 2013-10-21 11:17

Enterprise Capacity As of 2013/10/21 11:17

Environment	Platform	Last Week Start	Last Week End	Percentage of Change	Last Month Start	Last Month End	Percentage of Change
Environment	Physical	33	22	-33.3%	42	44	4.5%
Environment	Virtual	136	134	-1.4%	88	144	63.6%
Platform	ibm_bos	1	1	0.0%	2	1	-50.0%
Platform	ibm_bar	5	3	-40.0%	7	7	0.0%
Platform	ibm	3	2	-33.3%	3	3	0.0%
Platform	ibm	8	3	-62.5%	13	13	0.0%
Platform	ibm	2	1	-50.0%	5	3	-40.0%
Platform	ibm_hybr	2	2	0.0%	7	4	-42.8%
Platform	vmware_cluster	4	4	0.0%	1	4	333%
Platform	vmware_guest	93	93	0.0%	72	127	76.3%
Platform	vmware_host	14	14	0.0%	7	15	114.2%
Platform	whidow	9	2	-77.7%	8	8	0.0%
Platform	whidow_hybr	2	2	0.0%	2	4	100.0%
CPU	Physical CPUs	228	128	-43.8%	238	286	20.2%
CPU	Logical CPUs	274	144	-47.4%	302	426	40.4%
Storage	Storage Capacity (GB)	29,443.28	19,482.76	-33.8%	43,416.78	38,726.27	-10.8%
Memory	Memory Capacity (GB)	934.48	595.56	-36.3%	1,070.82	1,064.26	-0.6%

Perfect for providing a management-level overview of capacity, this report shows your current capacity and highlights whether that capacity usage is growing or shrinking. You can see counts for physical servers, virtual servers, operating system instances, CPUs, memory, and storage.

**Virtual Machine Profiles**  
Generated on 2013-10-21 11:17

Virtual Machine CPU Configuration As of 2013/10/21 11:17

Extra Small	Small	Medium	Large	Extra Large	Total
0	0	0	0	0	0

Virtual Machine Memory Configuration As of 2013/10/21 11:17

Extra Small	Small	Medium	Large	Extra Large	Total
0	0	0	0	0	0

Virtual Machine Activity As of 2013/10/21 11:17

VMs Created	VMs Deleted	VMs Creation Rate	VMs Deletion Rate	VMs Deletion Activity
0	0	0.0	0.0	0.0

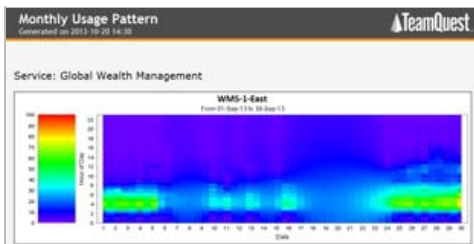
This Virtual Machine Profiles report gives a summary of the numbers of virtual machines you have of various sizes, based on CPU and memory allocation. The report also shows the rate of creation and deletion of virtual machines during the time interval shown.

**Virtualization Headroom**  
Generated on 2013-10-21 11:17

Virtualization Headroom As of 2013/10/21 11:17

Cluster Name	Active VMs	Total CPU (GHz)	CPU Usage (%)	CPU Headroom (%)	Total Memory (GB)	Active Memory (GB)	Memory Headroom (%)	Cluster Headroom (%)
Cluster1	10	100	50	50	100	50	50	50
Cluster2	20	200	60	40	200	120	40	40
Cluster3	30	300	70	30	300	210	30	30
Cluster4	40	400	80	20	400	320	20	20
Cluster5	50	500	90	10	500	450	10	10

This Virtualization Headroom report shows where you have opportunities for placing new virtual machines or for determining how many virtual machines you can potentially add to a VMware cluster.



This sample custom report uses color-coding to show when usage patterns for a service the user has titled "Global Wealth Management." Reports like this provide a quick visual indication that can help you spot problematic patterns.



Many times it's more efficient to be able to see many charts with just the min, max and averages highlighted. The "Sparkline" chart is excellent for boiling down all the important statistics yet still visualizing the entire set of datapoints.

## Compatibility

TeamQuest Surveyor can analyze...

...almost any aspect of performance and capacity that can be measured, including these, & more:

- Virtual Environments
  - IBM PowerVM

Third-party Data Sources TeamQuest

Surveyor can integrate with virtually any data source, including these, & more:

- TeamQuest CMIS
- BMC
  - Performance Assurance (BPA)



- Microsoft Hyper-V
- Oracle VM Server for SPARC
- Red Hat Enterprise Virtualization (KVM)
- VMware vSphere (ESX/ESXi)
- Xen
- and more...
- Operating Systems
  - AIX
  - HP-UX
  - Linux
  - Solaris
  - Windows
  - and more...
- Mainframes
- Business services
- IT services
- Financial KPIs
- Applications
- Databases
- Storage systems
- Power consumption
- Network
- and more...
- Patrol
- Xen
- and more...
- CA Nimsoft
- HP
  - OpenView Performance Manager (OVPM & OVPA)
  - OpenView Performance Insight (OVPI)
  - OpenView Reporter
  - and more...
- IBM
  - Tivoli Data Warehouse (TDW)
  - Tivoli Directory Server (TDS)
  - and more...
- IntelliMagic
- Microsoft
  - System Center Operations Manager (SCOM)
  - Microsoft Operations Manager (MOM)
  - and more...
- VMware VCenter
- Netuitive
- Oracle Enterprise Manager (OEM)
- Intel Data Center Manager (DCM)
- APC
- and more...

Customers using TeamQuest Products

